



Depression and Bipolar Support Alliance of San Diego

DBSA San Diego presents ...



John Lohrman

Insurance Options for People with Pre-Existing Conditions

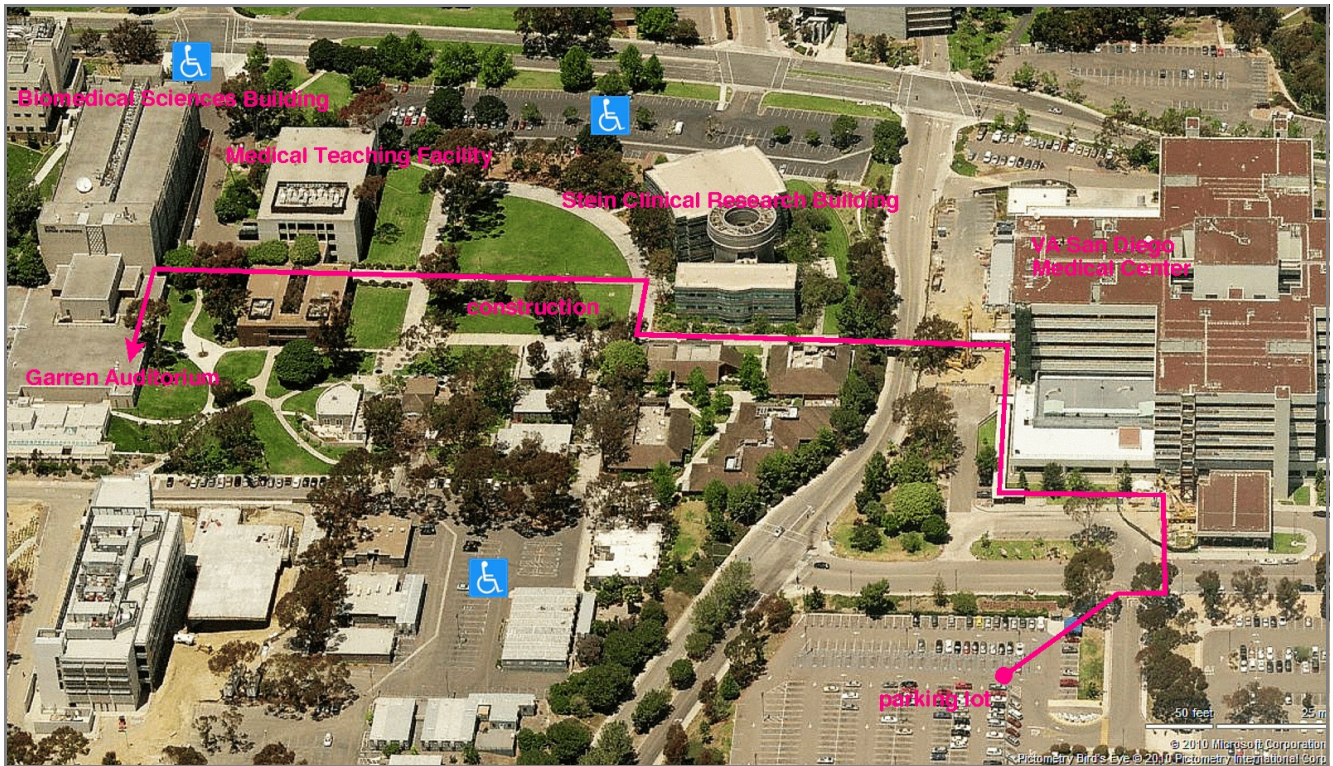
John will provide an overview of insurance programs (including eligibility and benefits) that are currently available for people with pre-existing medical conditions. He will also explain how the new healthcare reform affects consumers. There will be time for a question-and-answer period at the end. This lecture will include information on Medicare but not on Medi-Cal.

**When Monday, 06 December 2010
6:00pm – 8:00pm**

**Where Garren Auditorium
Biomedical Sciences Building
Medical School Campus
University of California, San Diego
La Jolla, California**

John Lohrman has been an independent broker for over 23 years and is an expert witness for the insurance industry and a Senior Medicare Specialist. He does volunteer work for the Cancer Lymphoma Society to help their patients with their medical rights to purchase insurance and is on the Health and Wellness Foundation for Tri-City Hospital where he also teaches the A, B, C, and part D's of Medicare at their Wellness seminars. John does volunteer work as well for the Ronald McDonald House and takes children cancer survivors on river trips into Texas with the help of Southwest Airlines.

There is *free parking* in the VA San Diego Medical Center parking lot. Garren Auditorium is a short walk over the footbridge. Follow the signs for about one block. *See the map on the reverse side for detailed directions.* For information on parking with "Disabled Person" placards or license plates, see <http://blink.ucsd.edu/facilities/transportation/permits/disabled.html> or see the map overleaf.



Walking Directions to Garren Auditorium

Follow the DBSA San Diego signs with the blue arrows along the way.

1. Start in the parking lot and walk to the bus stop in front of the VA San Diego Medical Center (usually called the VA Hospital in La Jolla).
2. Walk **west** to the covered outdoor corridor, turn **right** and walk down that corridor (along the western edge of the hospital) until you turn **left** when you get to the footbridge crossing Villa La Jolla Drive. Walk over that footbridge.
3. Continue walking past the **Stein Clinical Research Building** (on your **right**).
4. To avoid the construction area, follow the sidewalk **right** and then **left** where the fence ends, continuing toward the **Medical Teaching Facility** building.
5. Walk under the overhead walkway connecting the two parts of **Medical Teaching Facility**.
6. Continue walking until you reach the **Biomedical Sciences Building**.
7. Enter the large glass sliding doors and turn immediately **left** down a corridor, where there is a sign saying **Garren Auditorium** is in Room 1105.
8. Walk down the corridor, turning **right**, then **left**.
9. **Garren Auditorium** is down the first hallway to your **left**, Room 1105. You can enter at the bottom, where the lecturer is, or continue until you see a staircase going up on your **right**. This will take you to the top (back) of the auditorium.

Please note: The sliding glass doors to the Biomedical Sciences Building lock from the outside at 7pm, so please be sure to arrive before then.