



## Depression and Bipolar Support Alliance of San Diego



**American  
Red Cross**

San Diego and Imperial Counties

**Cruz Ponce, Senior Disaster Program Manager  
Anna Adler, MSW Intern**

# Red Cross Interactive Preparedness Training

This will be a Red Cross Ready event merging traditional preparedness, action, and recovery with mental health. Information will be provided about what to expect in a shelter, and there will be an interactive discussion about how the Red Cross and the mental health community can partner more effectively to serve San Diegans in disaster situations.

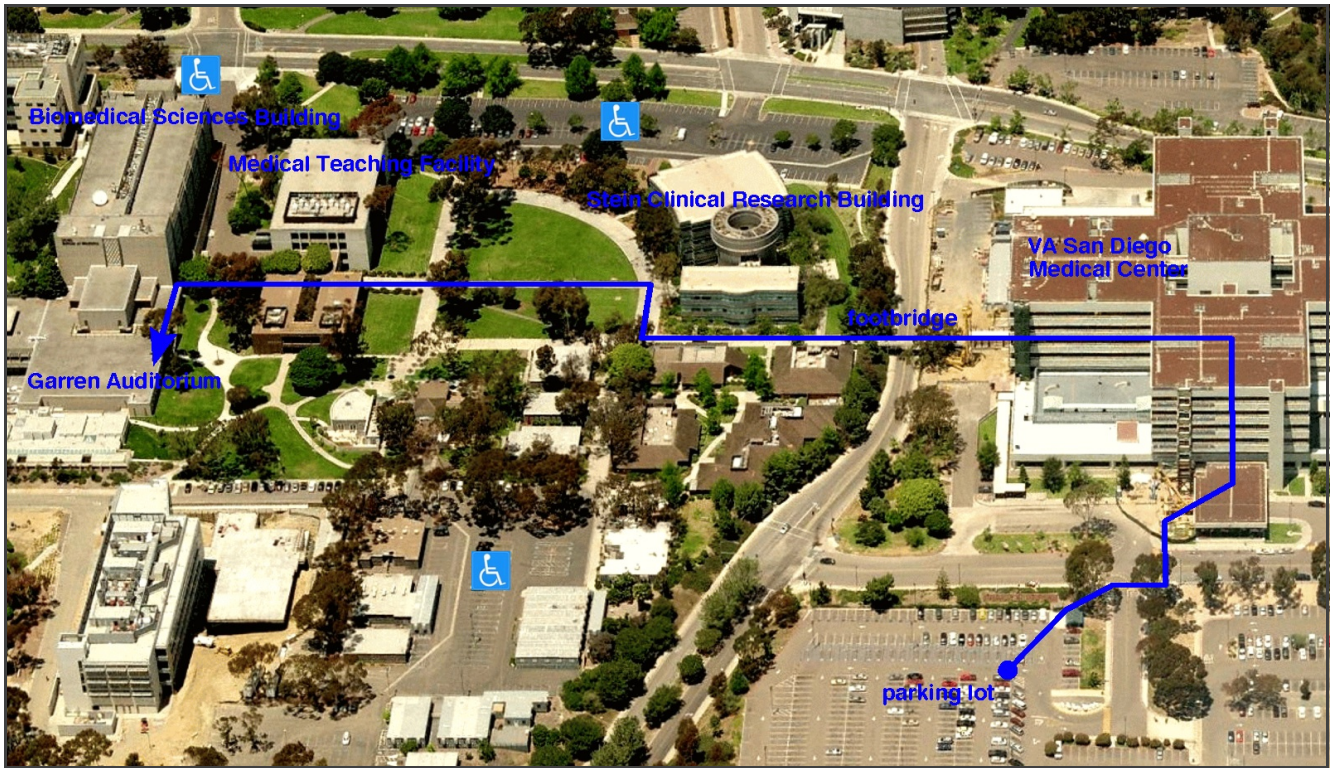
**when Monday, 07 April 2014  
6:00pm – 8:00pm**

**where Garren Auditorium  
Biomedical Sciences Building  
Medical School Campus  
University of California, San Diego  
La Jolla, California**

**Cruz Ponce** is the Senior Disaster Program Manager for San Diego County of your American Red Cross. Cruz has over eight years of disaster management experience and has deployed on several national relief operations, most recently, Hurricane Sandy.

**Anna Adler** has been interning with the American Red Cross as part of her Masters of Social Work program. She has been working with the disaster services department to help San Diego to become better prepared for emergency situations.

There is *free parking* in the VA San Diego Medical Center parking lot. Garren Auditorium is a short walk over the footbridge. Follow the signs for about one block. *See the map on the reverse side for detailed directions.* For information on parking with "Disabled Person" placards or license plates, visit the UCSD page <http://blink.ucsd.edu/facilities/transportation/permits/disabled.html> or see the map overleaf.



# Walking Directions to Garren Auditorium

Follow the **DBSA San Diego** signs with the **blue arrows** along the way.

1. From the parking lot, walk into the front (south) entrance of the VA San Diego Medical Center. Continue straight until you reach the center of the hospital, where you'll see the banks of elevators as well as a large compass on the floor.
2. Turn **left** (west) at the compass and keep going, out the glass doors and over the footbridge that spans Villa La Jolla Drive.
3. Continue walking past the Stein Clinical Research Building (on your **right**).
4. Follow the sidewalk **right** and then make the next **left** turn, continuing toward the Medical Teaching Facility building.
5. Walk under the walkway that connects the north and south parts of the Medical Teaching Facility.
6. Continue walking until you reach the Biomedical Sciences Building.
7. Enter the large glass sliding doors and immediately turn **left** down the corridor, where there is a sign saying Garren Auditorium is in Room 1105.
8. Walk down the corridor. Garren Auditorium will be on your **right**, Room 1105. You can enter at the bottom, where the lecturer is, or continue a bit farther until you see a staircase on your **right**, which would take you to the top (back) of the auditorium.

**Please note:** The sliding glass doors to the Biomedical Sciences Building lock from the outside at 7:00pm, so please be sure to arrive before then.